

SE-1200-IJ

1200 INK JET FEEDER

Parts Manual



SURE-FEED ENGINEERING

12050 49th STREET NORTH - CLEARWATER, FL. 33762-4301
PHONE: 727.571.3330 - FAX: 727.571.3443 - TOLL FREE: 1.800.INSERTER
web: sure-feed.com

VERSION HISTORY

The table below summarizes the history of this document as it is published onto the company website(s). It identifies the version, date of issue and revisions and changes.

VERSION	DATE	CHANGES
1200-IJ_PARTS_REV0	1-21-08	ORIGINAL RELEASE
1200-IJ_PARTS_REVa	9-5-08	Added shroudless separator, updated drawings

REVISION CONVENTIONS-DOCUMENT

VERSION: name of document with revision_level of entire document- level designates minor changes that do not require revision change

DATE: date of issue for copying and publication of document.

CHANGES: details of document revision_level.

REVISION CONVENTIONS-PAGES

DRAWING NO./REVISION: references actual engineering drawing revision used in this document. NOTE: item no. in this document BOM corresponds with item no. of referenced engineering drawing.

i.e. BOM title containing (18020-366rA) refers to drawing number (18020-366) and drawing revision (rA, B, ZZZ)

BOM:

Item number revision- signifies new addition to drawing

P/N revision- signifies part number change due to obsolescence, unavailability and/or major change of part

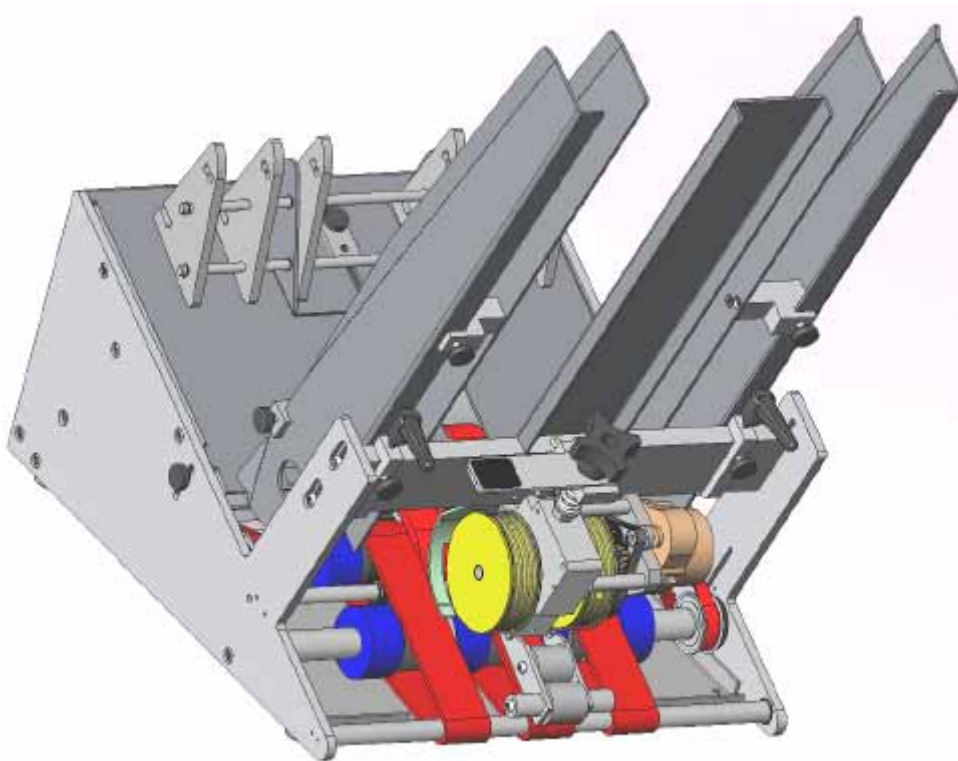
Qty revision- self-explanatory

Description revision- signifies change in part name

DRAWING:

Figure number / revision- signifies the corresponding BOM in this document. Different revision figures are retained due to manufacturing changes made over time.

1200 IJ FEEDER **With Shrouded Separator**



1200 IJ FEEDER **With Shroudless Separator**

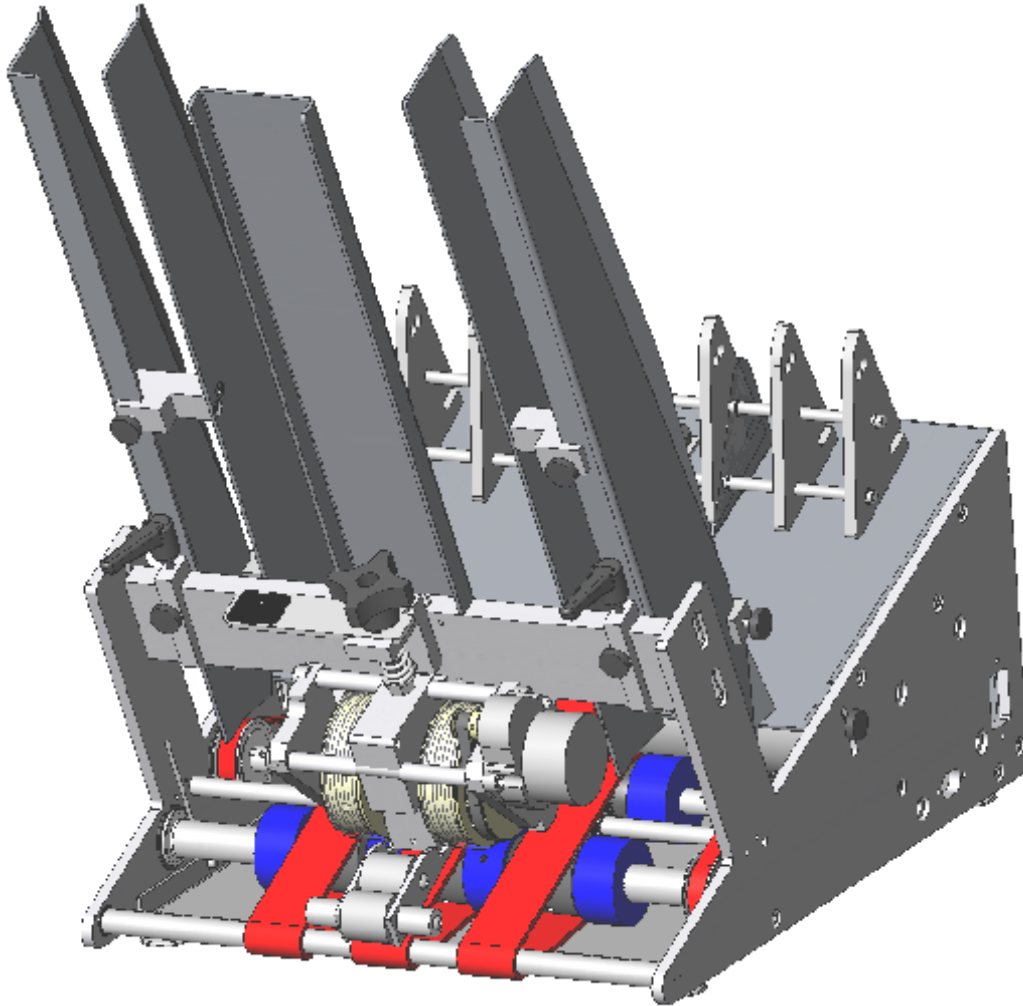


TABLE OF CONTENTS

1200 IJ FEEDER

FEEDER ASSEMBLY: SHROUDED SEPARATOR (FIG. 1)	4-5
110V SEPARATOR W/CROSSBAR (FIG. 2)	6
110V SEPARATOR (FIG. 2A)	7-8
FEEDER ASSEMBLY: SHROUDLESS SEPARATOR (FIG. 1A)	5a
110V SEPARATOR W/CROSSBAR (FIG. 2-1)	6a
110V SEPARATOR (FIG. 2-1A)	7a-8a
SHAFT, FRONT (FIG. 3)	9
3/4" NIP ROLLER SHAFT (FIG. 4)	10
MAIN SHAFT (FIG. 5)	11
JACK SHAFT (FIG. 6)	12
ELEVATOR SHAFT (FIG. 7)	13
IDLER SHAFT (FIG. 8)	14
MOTOR (FIG. 9)	15
CHASSIS (FIG. 10)	16
TRAILING ARM (FIG. 11)	17
SIDE GUIDES: SHROUDED SEPARATOR (FIG. 12)	18
SIDE GUIDES: SHROUDLESS SEPARATOR (FIG. 12A)	18a
PAPER SLIDE (FIG. 13)	19
ELECTRICAL (FIG. 14)	20
ELECTRICAL OPTIONS (FIG. 15-16)	21

1200 IJ FEEDER ASSEMBLY 10022-043r0**(FIG 1: SHROUDED SEPARATOR) (FIG 1A: SHROUDLESS SEPARATOR)**

ITEM	PART NO.	QTY.	DESCRIPTION
FIG1:1	SEE FIG. 2	1	ASSY, 110V SEPARATOR W/CROSSBAR (10020-459)
FIG1A:1	SEE FIG 2-1	1	ASSY, 110V SEPARATOR W/CROSSBAR (10020-459rA)
2	SEE FIG. 3	1	ASSEMBLY, FRONT SHAFT-1200IJ (10020-017)
3	SEE FIG. 4	1	ASSEMBLY, NIP ROLLER SHAFT (10020-024)
4	SEE FIG. 5	1	ASSEMBLY, MAIN SHAFT (10020-039)
5	SEE FIG. 6	1	ASSEMBLY, JACK SHAFT (10020-047)
6	SEE FIG. 7	1	ASSEMBLY, ELEVATOR SHAFT (10020-055)
7	SEE FIG. 8	1	ASSEMBLY, SUPPORT IDLER SHAFT (10020-032)
8	SEE FIG. 9	1	ASSEMBLY, MOTOR (10020-060)
9	SEE FIG. 10	1	ASSEMBLY, CHASSIS (10020-063)
10	SEE FIG. 11	1	ASSEMBLY, TRAILING ARM (10020-072)
11	SEE FIG. 12	1	ASSEMBLY, SIDE GUIDES (10020-010)
12	SEE FIG. 13	1	ASSEMBLY, PAPER SLIDE (10020-058)
13	99000-004	3	BELT, RED GUM
14	99000-005	2	BELT, ELEVATOR (RED)
15	99000-001	1	BELT, TIMNG, 90XL037
16	99000-002	1	BELT, TIMNG, 110XL037
17	99000-003	1	BELT, TIMNG, 120XL037
18	-	4	SCREW, SKT HEAD, #10-24 X 3/8

See next page for details

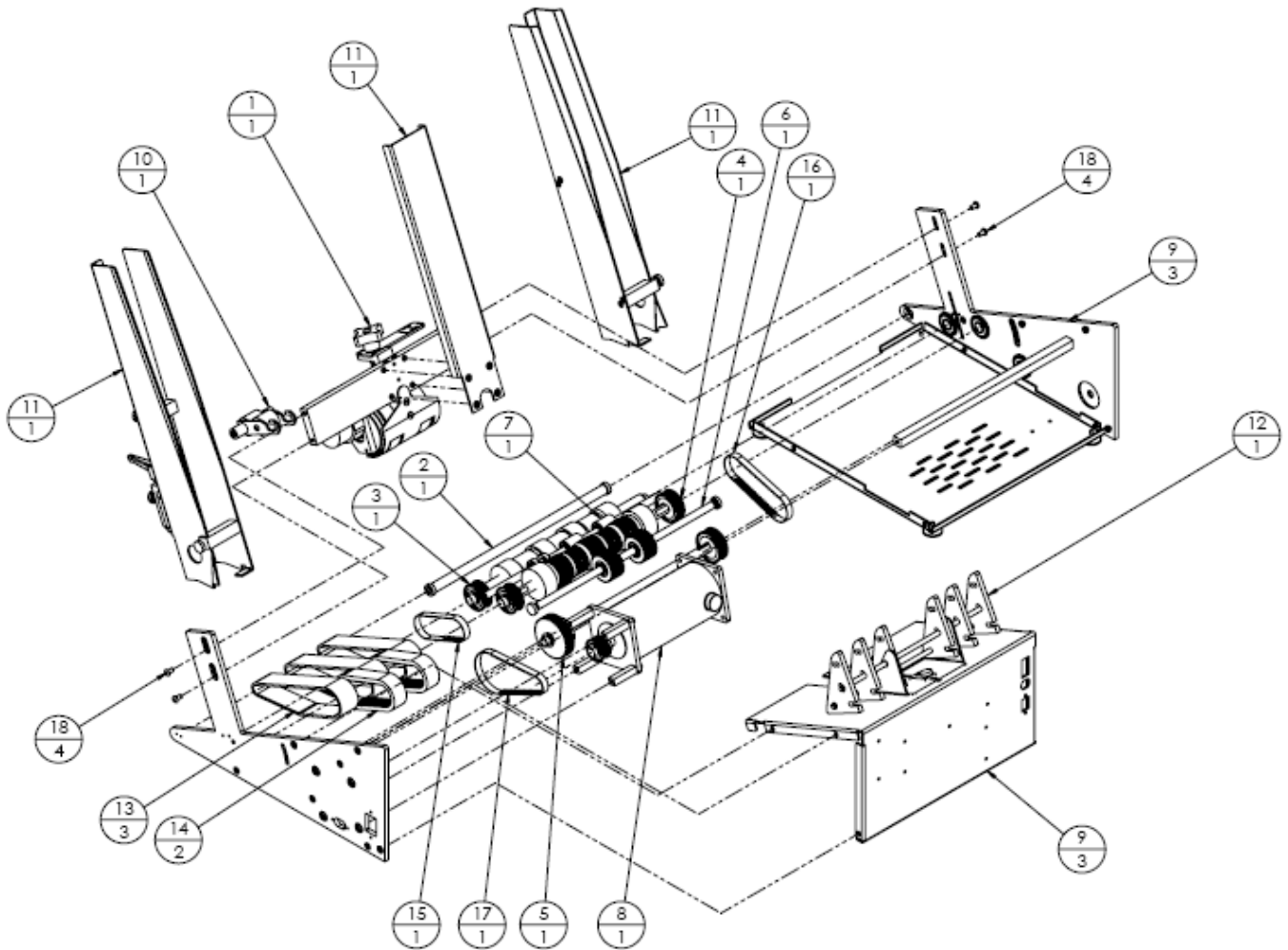


FIG 1: Shrouded Separator

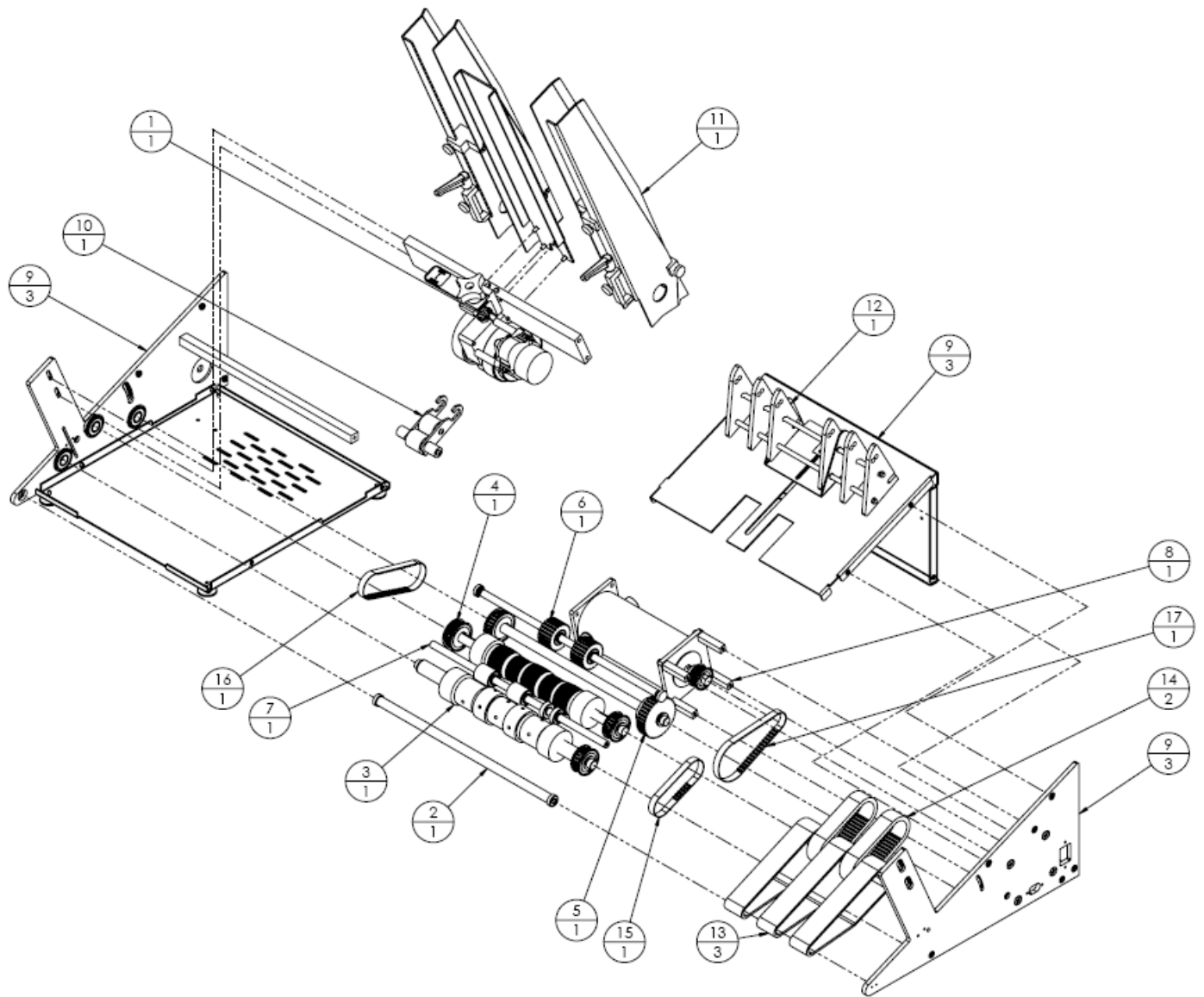
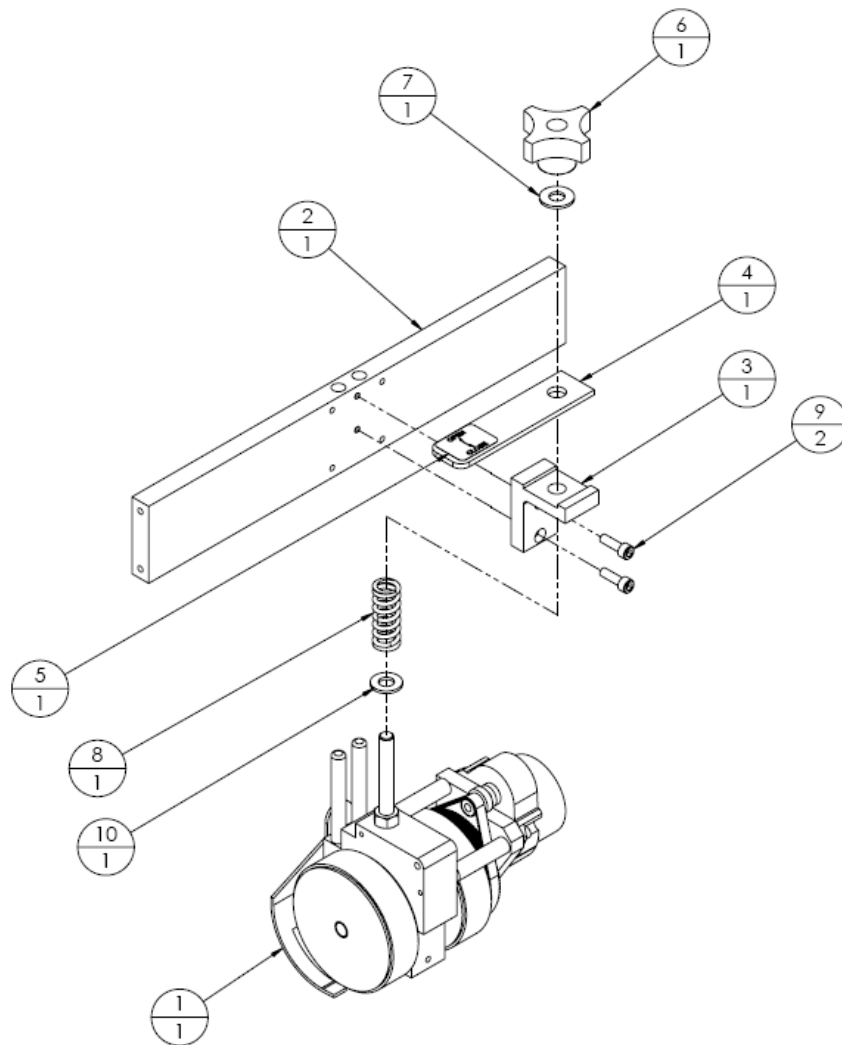


FIG 1A: Shroudless Separator

1200 IJ FEEDER ASSEMBLY (Fig. 2)
110V SHROUDED SEPARATOR W/CROSS BAR (10020-459r0)

ITEM	PART NO.	QTY.	DESCRIPTION
1	SEE FIG. 2A	REF	ASSEMBLY, SEPARATOR, 110V, CW (10020-002)
2	10003-002	1	CROSS BAR, 1200 IJ
3	10007-010	1	BLOCK, SEPARATOR ADJUSTING
4	10008-024	1	BAR, SEPARATOR RELEASE
5	18017-008	1	LABEL, FEEDER SEPARATOR ADJUSTING
6	99004-001	1	KNOB, FEMALE 5/16-24
7	99003-015	1	WASHER, NYLON, 5/16 X 1/16 THK
8	99005-045	1	SPRING, COMPRESSION
9	-	2	SCREW, SKT HD, #10-24 X 5/8
10	-	1	FLAT WASHER, 5/16

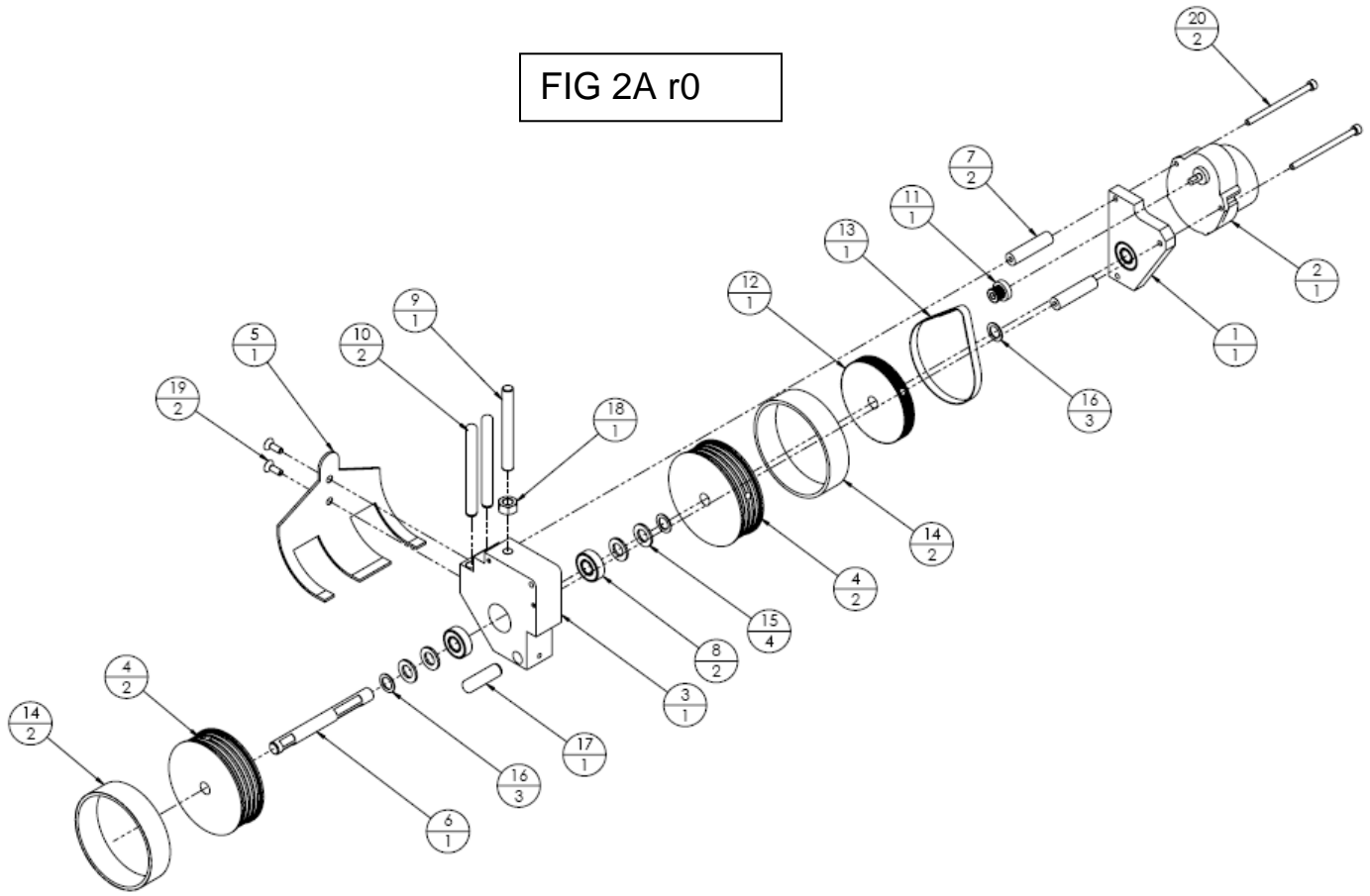


ASSEMBLY, SEPARATOR, 110V, CW (10020-002r0) (Fig. 2A)

ITEM	PART NO.	QTY.	DESCRIPTION
1	10020-314	1	ASSY, MOTOR PLATE MTG, LH
-	10011-001	1 EA	PLATE, MOTOR MOUNT
-	99003-001	1 EA	BEARING, 3/8 X 7/8, SHIELDED
2	10018-034	1	ASSY, MOTOR SEPARATOR, 110V, CW, 60 HZ
-	99001-001	1 EA	MOTOR, SEPARATOR, 110 VAC, 1/3 RPM
-	98020-065	1 EA	CAPACITOR, 0.25 μ f
-	98016-023	1 EA	CONNECTOR, 2-POSITION MALE
3	10007-001	1	BLOCK, SEPARATOR 3" ROLLER
4	10006-001	2	WHEEL, SEPARATOR 3" DIA.
5	10005-003	1	SHROUD, SEPARATOR
6	10004-001	1	SHAFT, SEPARATOR
7	10012-002	2	STANDOFF, SEPARATOR MOTOR
8	99003-001	2	BEARING, 3/8 X 7/8, SHIELDED
9	10004-028	1	STUD, SEPARATOR ADJUSTING
10	99006-002	2	PIN, DOWEL, 5/16 X 3
11	99002-002	1	PULLEY, TIMING, 16MXL025, 3/16B
12	99002-001	1	PULLEY, TIMING, 100MXL025, 3/8B
13	99000-006	1	BELT, TIMING, 115MXL025
14	10014-001	2	BELT, SEPARATOR 3"
15	99003-017	4	WASHER, NYLON 3/8 X 1/16 THK
16	99003-016	3	WASHER, NYLON 3/8 X 1/32 THK
17	99006-001	1	PIN, DOWEL, 3/8 X 1-1/4
18	-	1	NUT, HEX, 5/16-24
19	-	2	SCREW, FLAT HD, #8-32 X 1/2
20	-	2	SCREW, SKT HD, #6-32 X 2-1/2

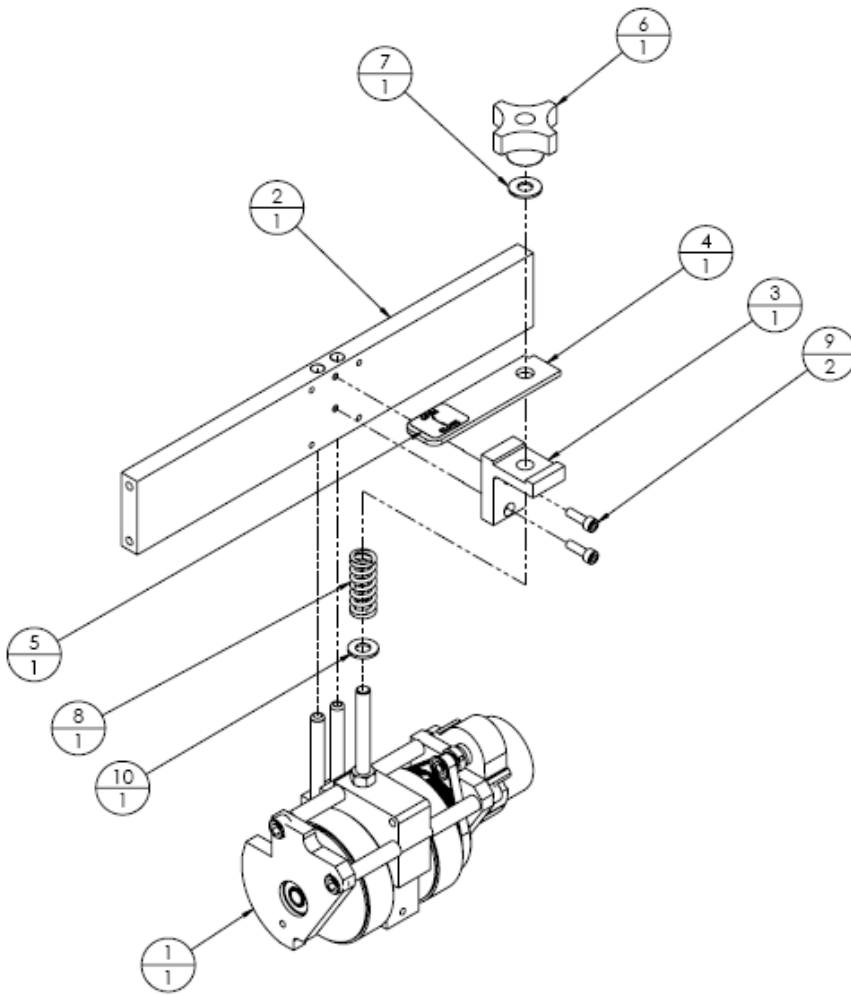
See next page for details

FIG 2A r0



1200 IJ FEEDER ASSEMBLY (Fig. 2-1)
110V SHROUDLESS SEPARATOR W/CROSS BAR (10020-459rA)

ITEM	PART NO.	QTY.	DESCRIPTION
1	SEE FIG. 2-1A	REF	ASSEMBLY, SEPARATOR, 110V, CW (10020-515)
2	10003-002	1	CROSS BAR, 1200 IJ
3	10007-010	1	BLOCK, SEPARATOR ADJUSTING
4	10008-024	1	BAR, SEPARATOR RELEASE
5	18017-008	1	LABEL, FEEDER SEPARATOR ADJUSTING
6	99004-001	1	KNOB, FEMALE 5/16-24
7	99003-015	1	WASHER, NYLON, 5/16 X 1/16 THK
8	99005-045	1	SPRING, COMPRESSION
9	-	2	SCREW, SKT HD, #10-24 X 5/8
10	-	1	FLAT WASHER, 5/16

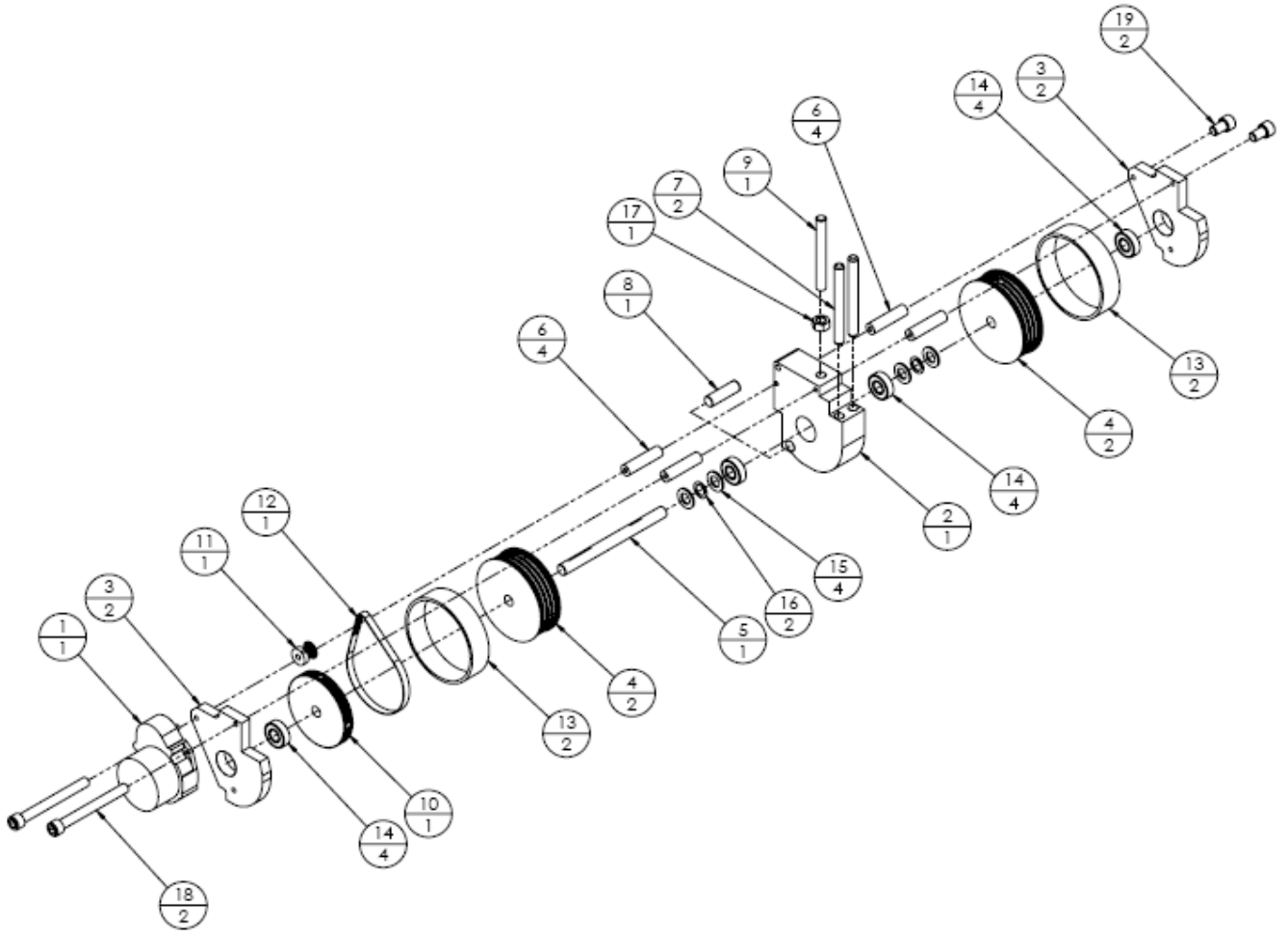


ASSEMBLY, SEPARATOR, 110V, CW (10020-515r0) (Fig. 2-1A)

ITEM	PART NO.	QTY.	DESCRIPTION
1	10018-034	1	ASSY, MOTOR SEPARATOR, 110V, CW, 60 HZ
-	99001-001	1 EA	MOTOR, SEPARATOR, 110 VAC, 1/3 RPM
-	98020-065	1 EA	CAPACITOR, 0.25 μ f
-	98016-023	1 EA	CONNECTOR, 2-POSITION MALE
-	98016-057	2	CONTACT, PIN, 24-18 AWG
2	10007-142	1	BLOCK, SEPARATOR (SHROUDLESS)
3	10011-083	2	PLATE, SEPARATOR MOTOR MTG
4	10006-001	2	WHEEL, SEPARATOR 3" DIA.
5	10004-264	1	SHAFT, SEPARATOR
6	10012-002	4	STANDOFF, SEPARATOR MOTOR
7	99006-002	2	PIN, DOWEL, 5/16 X 3
8	99006-001	1	PIN, DOWEL, 3/8 X 1-1/4
9	10004-028	1	STUD, SEPARATOR ADJUSTING
10	99002-001	1	PULLEY, TIMING, 100MXL025, 3/8B
11	99002-002	1	PULLEY, TIMING, 16MXL025, 3/16B
12	99000-006	1	BELT, TIMING, 115MXL025
13	10014-001	2	BELT, SEPARATOR 3"
14	99003-001	2	BEARING, 3/8 X 7/8, SHIELDED
15	99003-017	2	WASHER, NYLON 3/8 X 1/16 THK
16	99003-016	2	WASHER, NYLON 3/8 X 1/32 THK
17	-	1	NUT, HEX, 5/16-24
18	-	2	SCREW, SKT HD, #6-32 X 2-1/4
19	-	2	SCREW, SKT HD, #6-32 X 2-1/2
20	99003-020	2	BEARING, 3/8 X 7/8, SEALED W/ SNAP RING

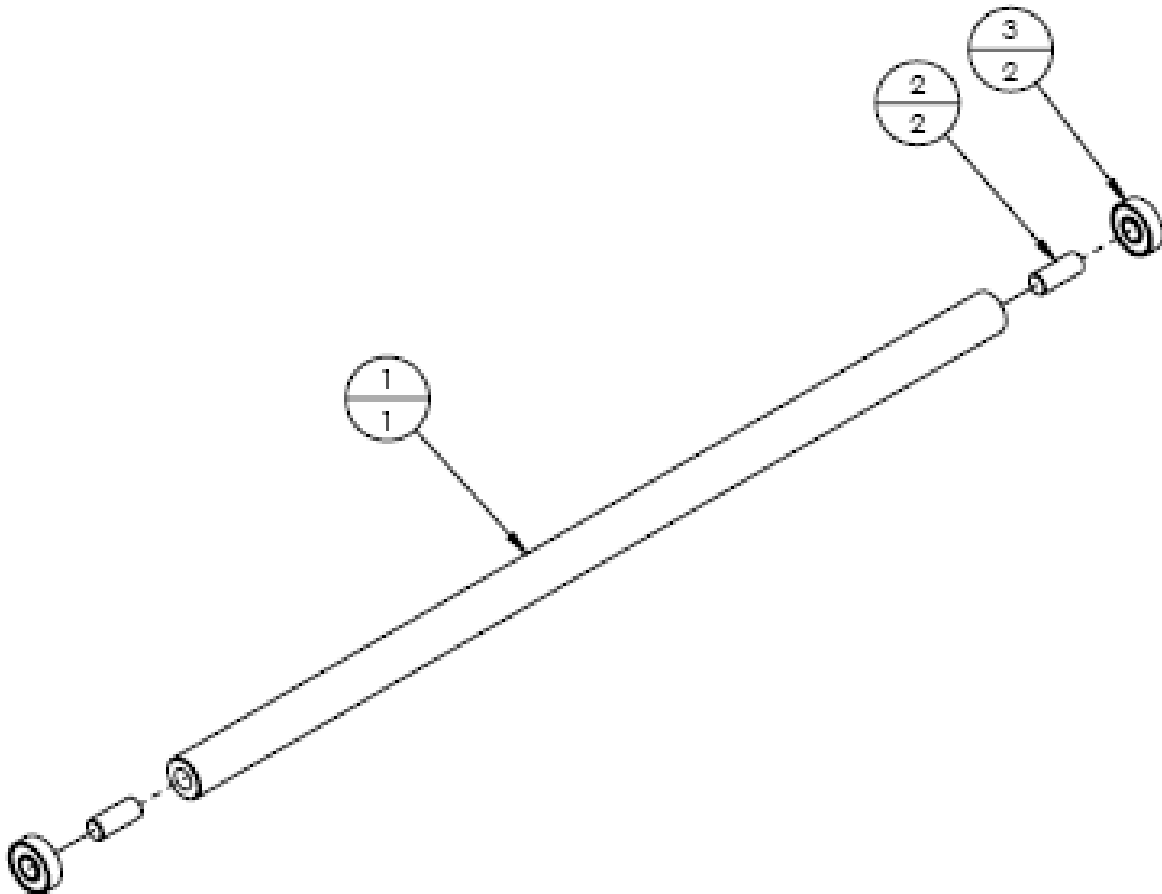
See next page for details

FIG 2-1A



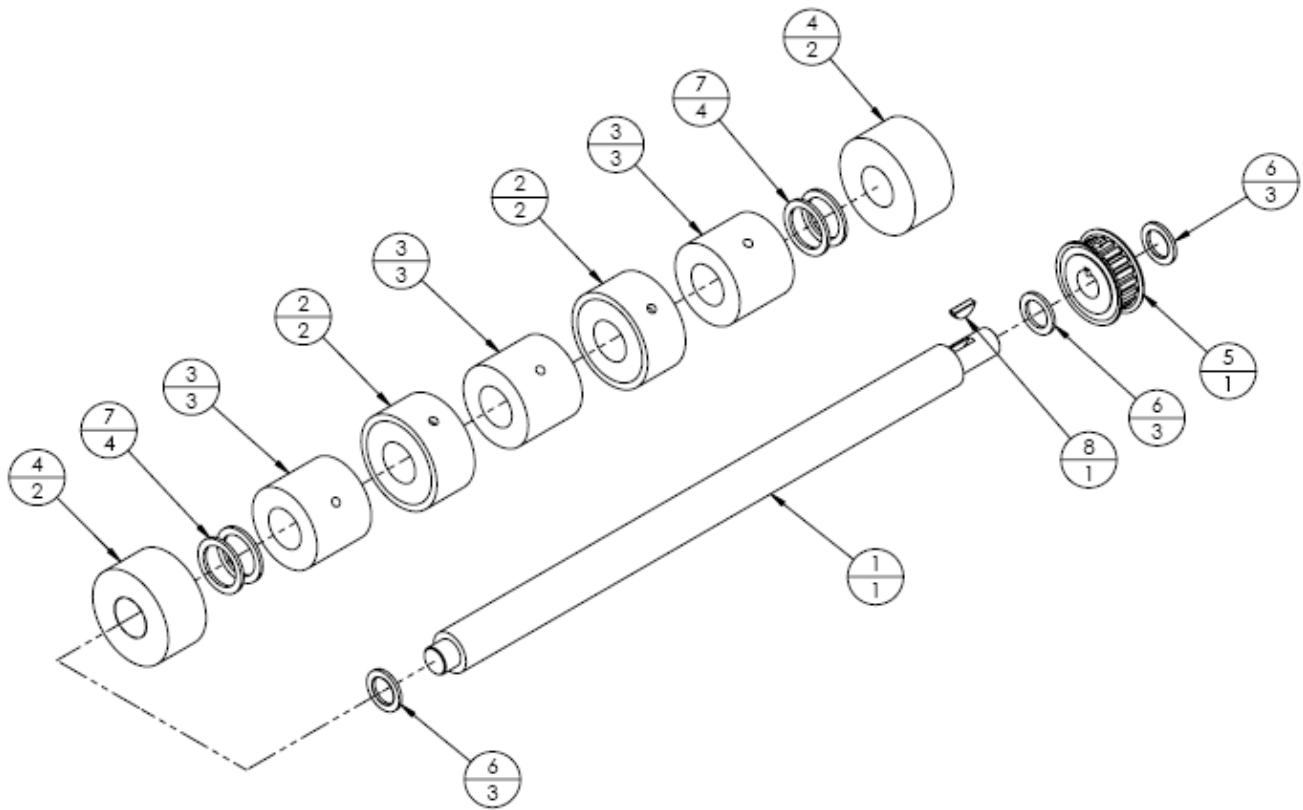
ASSEMBLY, FRONT SHAFT (10020-017r0) (Fig. 3)

ITEM	PART NO.	QTY.	DESCRIPTION
1	10004-024	1	SHAFT, FRONT
2	99006-028	2	PIN, DOWEL, 1/4 X 5/8
3	99003-056	2	BEARING, 1/4 X 5/8 SEALED



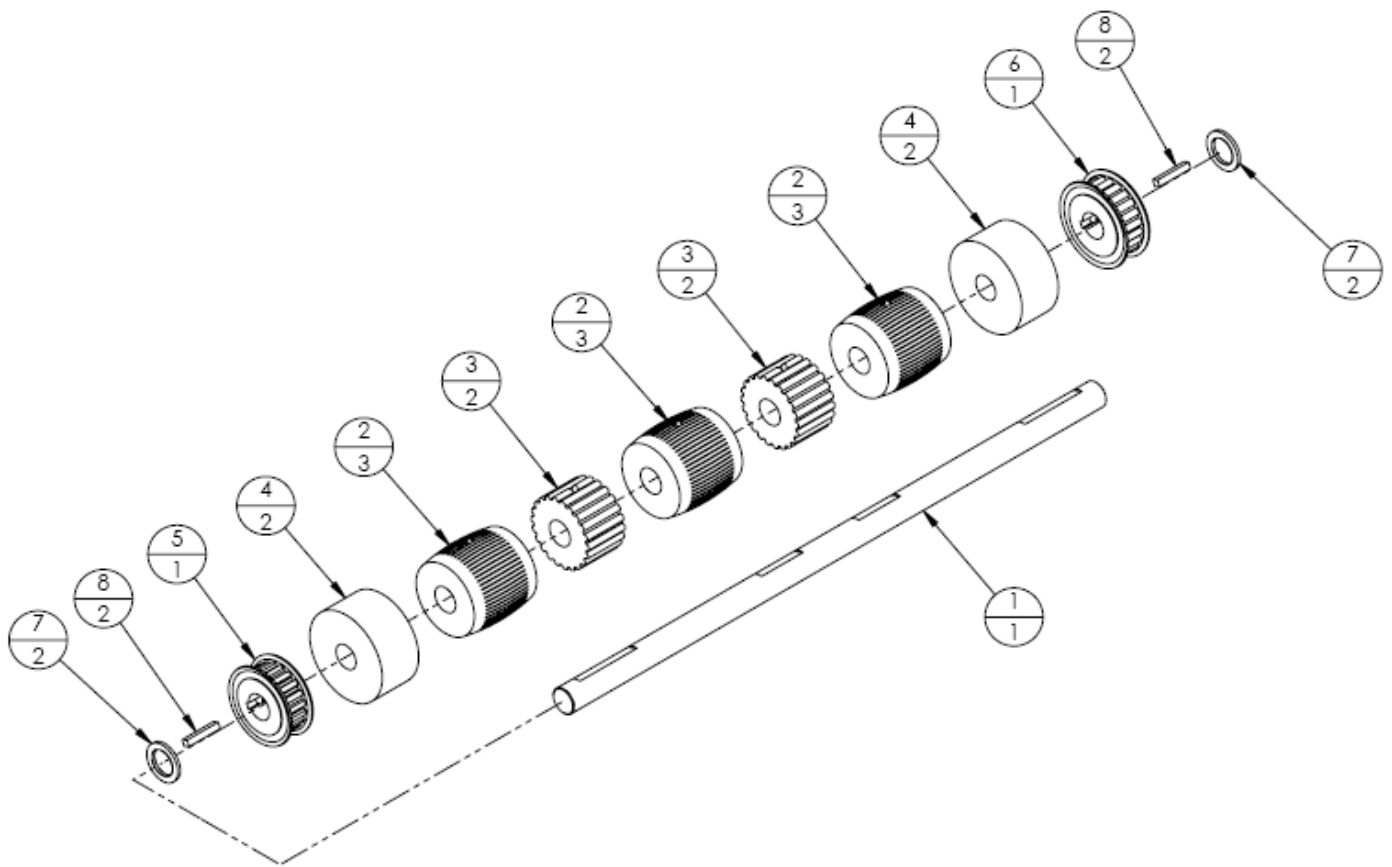
ASSEMBLY, NIP ROLLER SHAFT (10020-024r0) (Fig. 4)

ITEM	PART NO.	QTY.	DESCRIPTION
1	10004-117	1	SHAFT, NIP ROLLER-3/4
2	10006-070	2	ROLLER, NIP, 3/4 B
3	10006-071	3	PULLEY, MATE, 3/4 B
4	10006-069	2	ROLLER, FEEDER, 3/4 B
5	99002-054	1	PULLEY, 20XL037, 1/2B
6	99003-018	3	WASHER, NYLON, 1/2 X 1/16
7	99003-082	4	WASHER, NYLON, 3/4 X 1/16
8	99034-004	1	KEY, WOODRUFF, 1/8 X 1/2



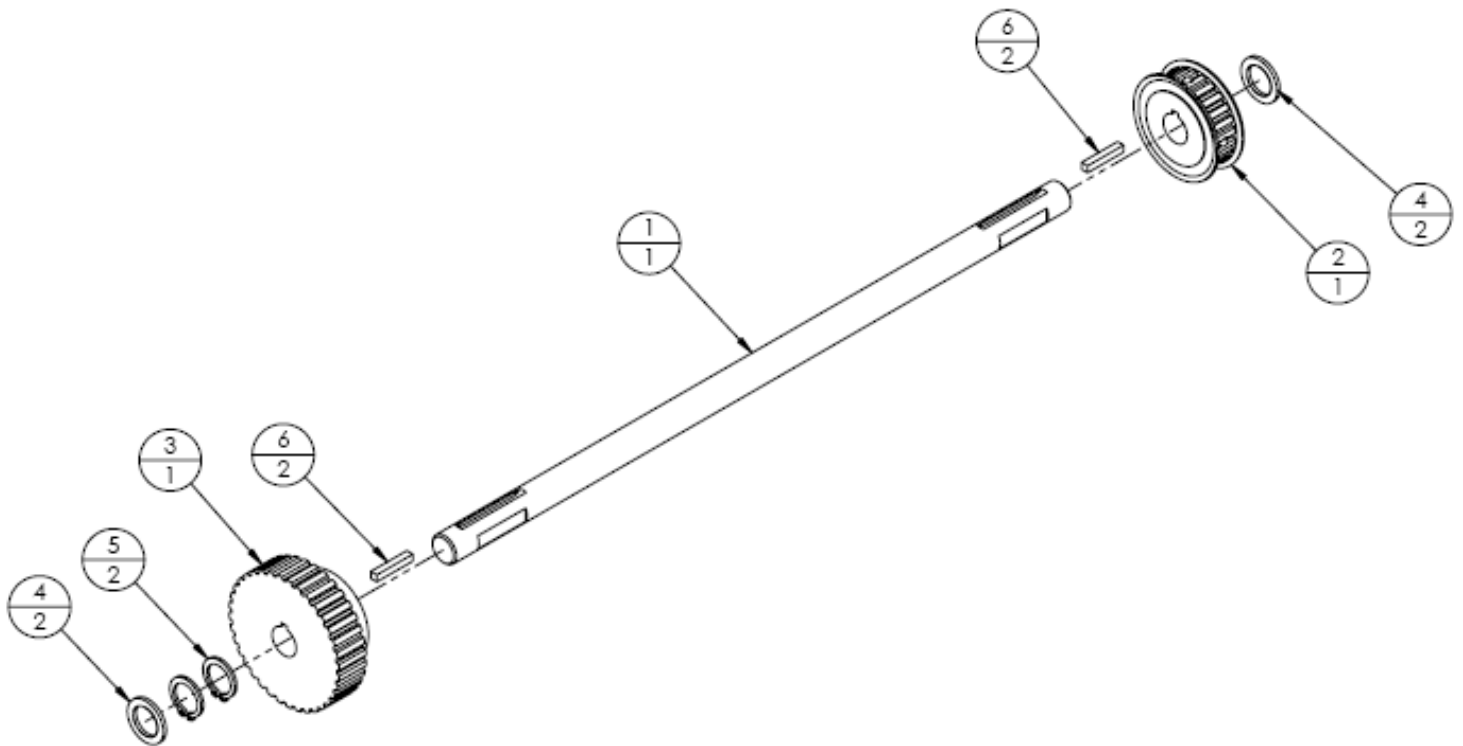
ASSEMBLY, MAIN SHAFT (10020-039r0) (Fig. 5)

ITEM	PART NO.	QTY.	DESCRIPTION
1	10004-021	1	SHAFT, DRIVE (ELEVATOR BELT)
2	10006-018	3	PULLEY, CROWNED
3	10006-021	2	PULLEY, ELEVATOR DRIVE
4	10006-007	2	ROLLER, FEEDER, 1/2 B
5	99002-054	1	PULLEY, 20XL037, 1/2B
6	99002-074	1	PULLEY, TIMING, 22XL037, 1/2B W/KEYWAY
7	99003-018	2	WASHER, NYLON, 1/2 X 1/16
8	99034-003	2	KEY, SQUARE, 1/8 X 3/4



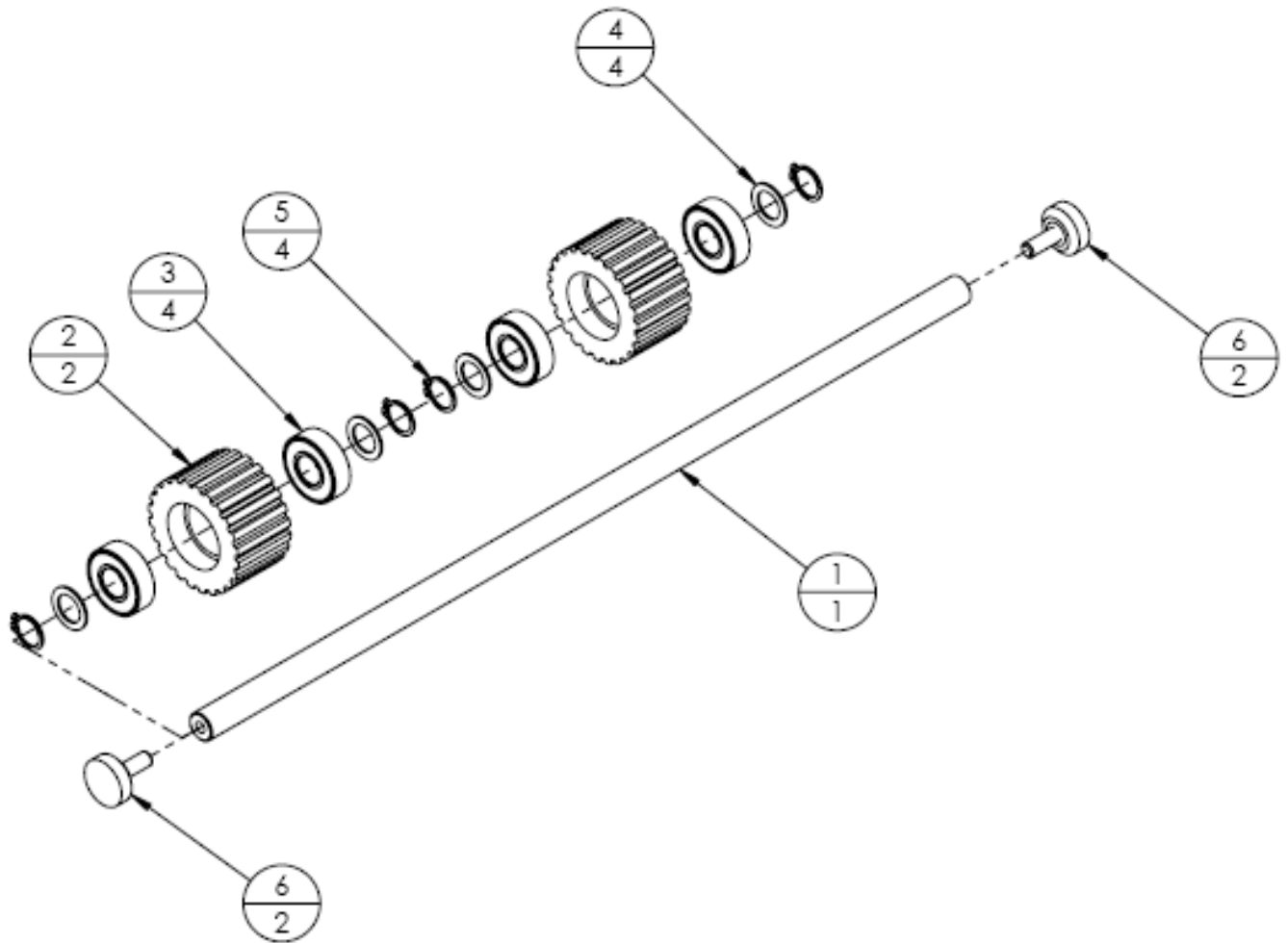
ASSEMBLY, JACK SHAFT (18020-047r0) (Fig. 6)

ITEM	PART NO.	QTY.	DESCRIPTION
1	10004-022	1	SHAFT, JACK
2	99002-031	1	PULLEY, TIMING, 24XL037, 1/2B
3	99002-005	1	PULLEY, TIMING, 36XL037, 1/2 B
4	99003-018	2	WASHER, NYLON, 1/2 X 1/16
5	99022-004	2	SNAP RING, 1/2
6	99034-003	2	KEY, SQUARE, 1/8 X 3/4



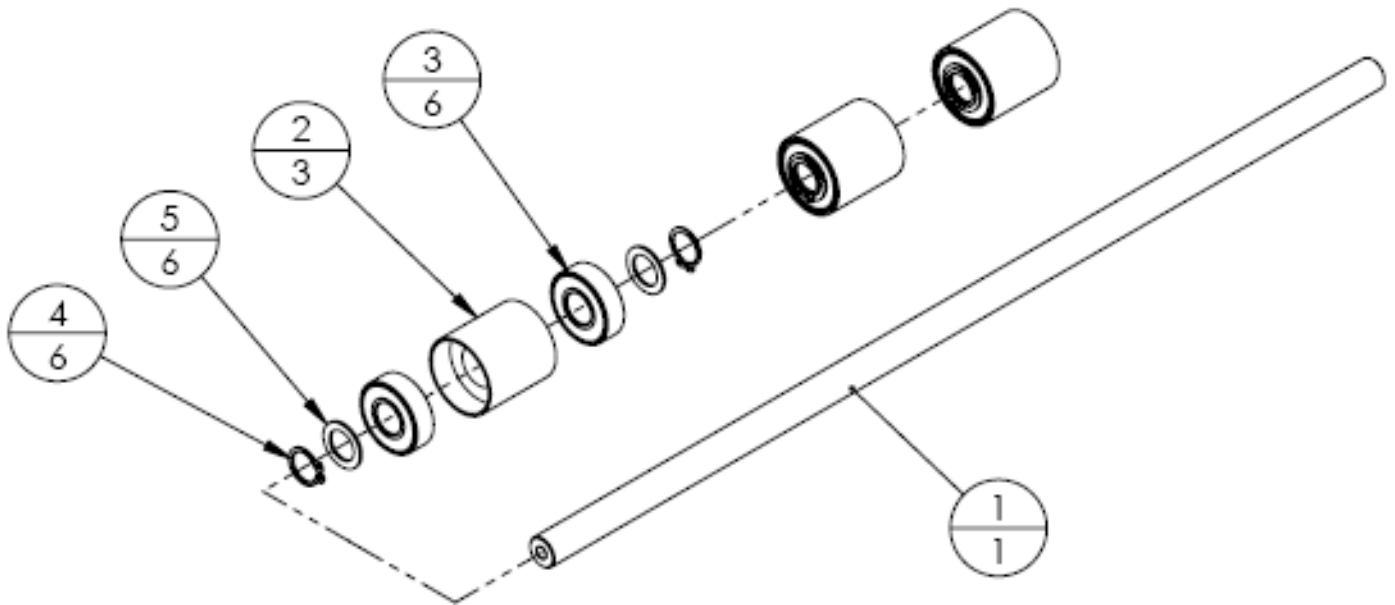
ASSEMBLY, ELEVATOR SHAFT (10020-055r0) (Fig. 7)

ITEM	PART NO.	QTY.	DESCRIPTION
1	10004-023	1	SHAFT, SUPPORT IDLER
2	10006-022	2	PULLEY, ELEVATOR IDLER
3	99003-001	4	BEARING, SEALED, 3/8 X 7/8
4	99003-016	4	WASHER, NYLON, 3/8 X 1/32
5	99022-003	4	SNAP RING, 3/8
6	10020-317	2	ASSY, KNOB, #10-24 X 1/2



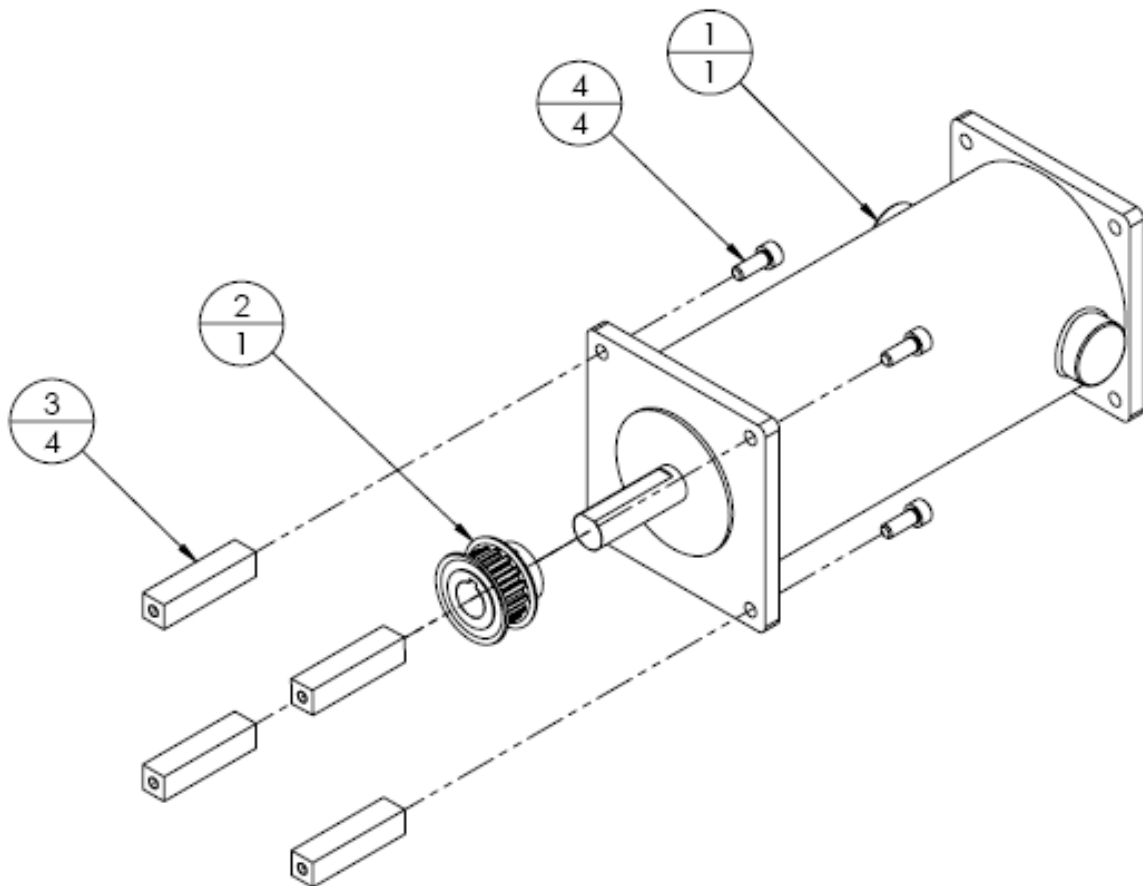
ASSEMBLY, SUPPORT IDLER SHAFT (10020-032r0) (Fig. 8)

ITEM	PART NO.	QTY.	DESCRIPTION
1	10004-023	1	SHAFT, SUPPORT IDLER
2	10006-012	3	ROLLER, IDLER
3	99003-001	6	BEARING, SEALED, 3/8 X 7/8
4	99022-003	6	SNAP RING, 3/8
5	99003-016	6	WASHER, NYLON, 3/8 X 1/32



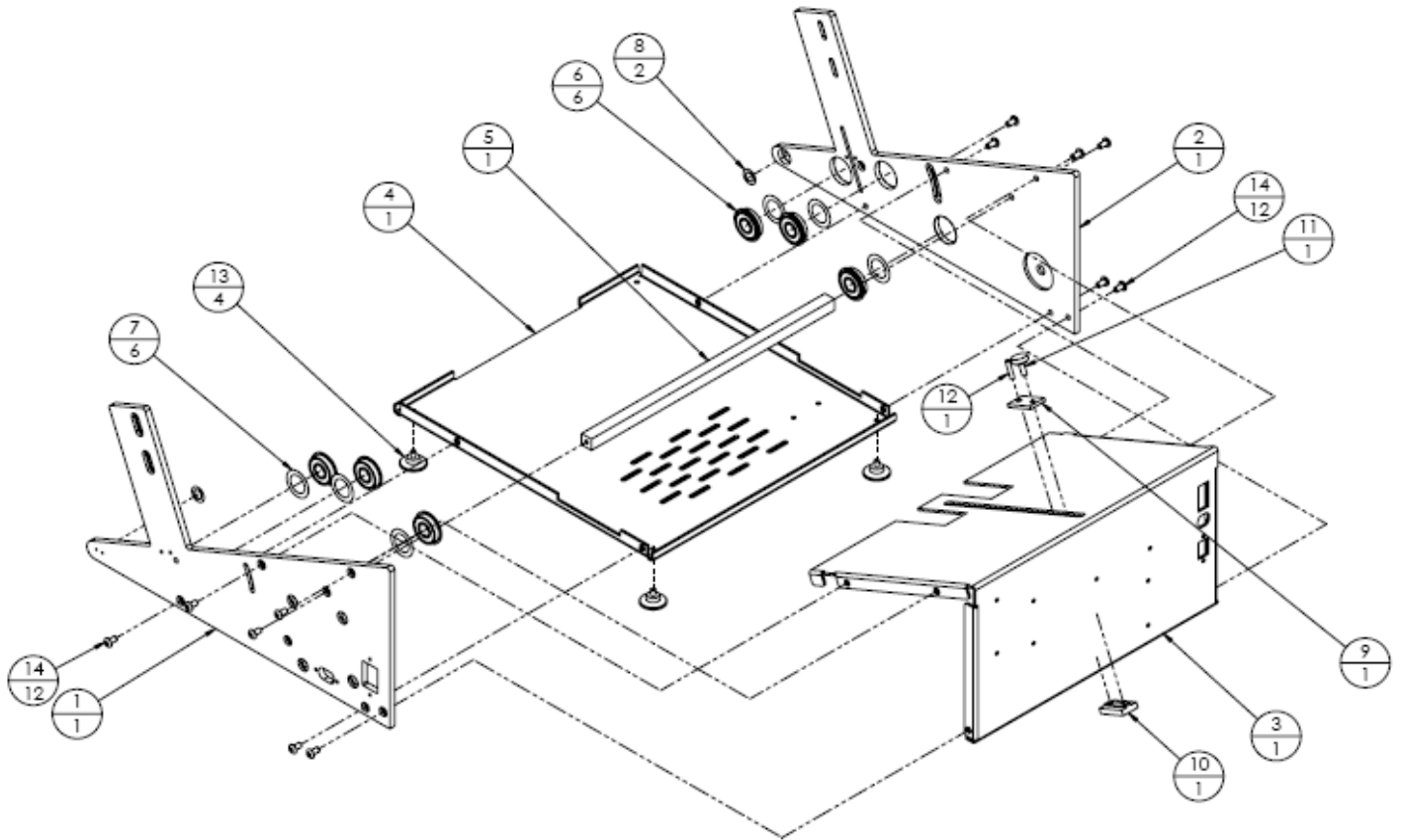
ASSEMBLY, MOTOR (10020-060r0) (Fig. 9)

ITEM	PART NO.	QTY.	DESCRIPTION
1	99001-032	1	MOTOR, 1/6 HP, 4Z528, DC
2	99002-007	1	PULLEY, TIMING, 16XL037-1/2B
3	10012-004	4	STANDOFF, MOTOR
4	-	4	SCREW, SKT HD, #10-24 X 1/2
-	98016-057	2	CONTACT, PIN, 24-18 AWG



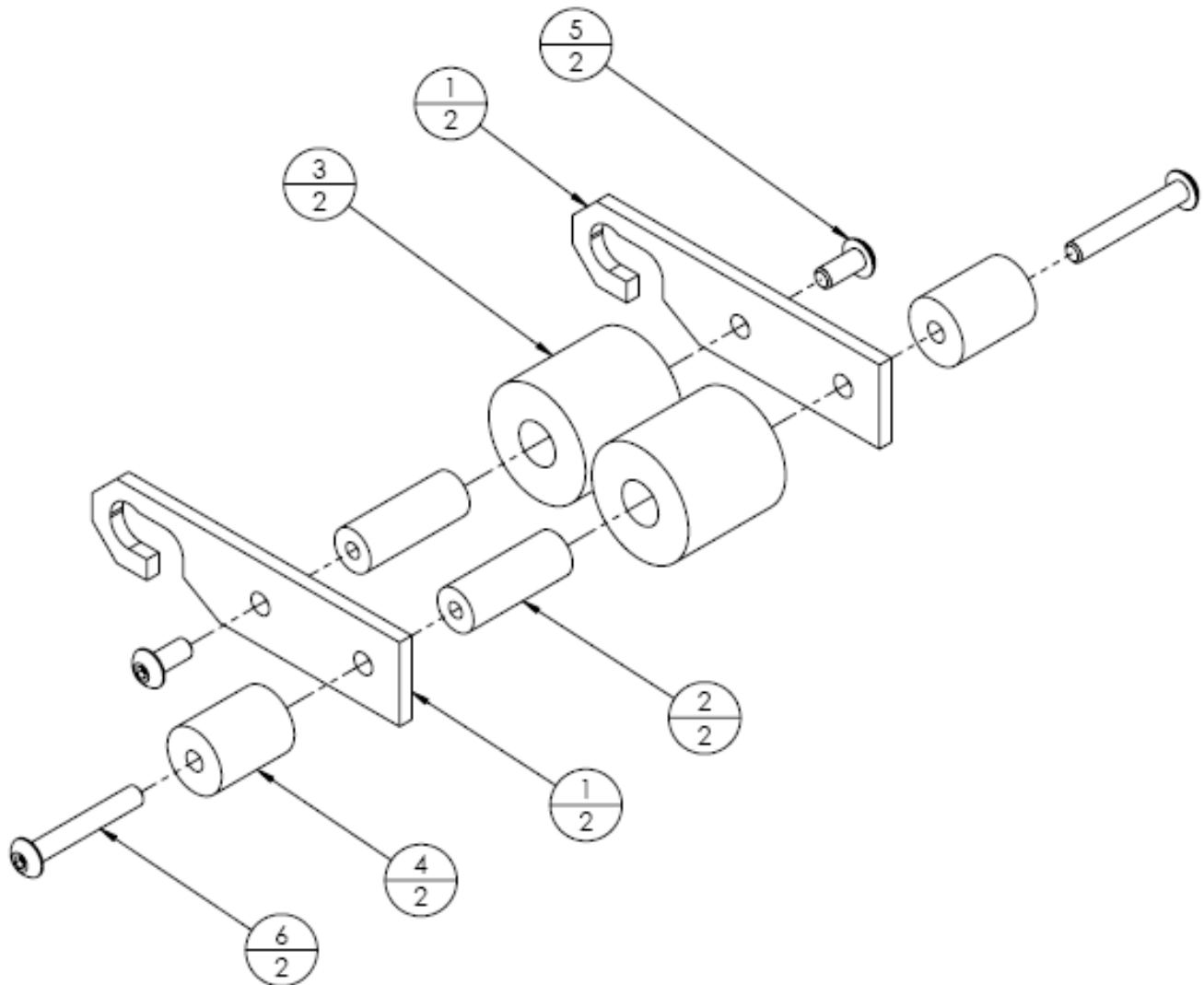
ASSEMBLY, CHASSIS (10020-063r0) (Fig. 10)

ITEM	PART NO.	QTY.	DESCRIPTION
1	10000-003	1	SIDE FRAME, LH
2	10000-004	1	SIDE FRAME, RH
3	10001-004	1	COVER, TOP
4	10002-002	1	BOTTOM PLATE, FEEDER
5	10008-008	1	CROSS BRACE (UPPER)
6	99003-083	6	BEARING, 1/2 X 1-1/8 SEALED
7	99036-003	6	SHIM, BEARING, 3/4 X 1-1/8 X .006
8	99036-005	2	SHIM, ARBOR, 3/8 X 5/8 X .006
9	10007-004	1	WASHER, PAPER SLIDE
10	10007-042	1	NUT, PAPER SLIDE
11	10020-317	1	ASSY, KNOB, #10-24 X 1/2
12	99006-020	1	PIN, ROLL, 5/32 X 3/4
13	99007-001	4	FOOT, SUCTION, #8-32
14	-	10	SCREW, SKT HD, #10-24 3/8



ASSEMBLY, TRAILING ARM (10020-072r0) (Fig. 11)

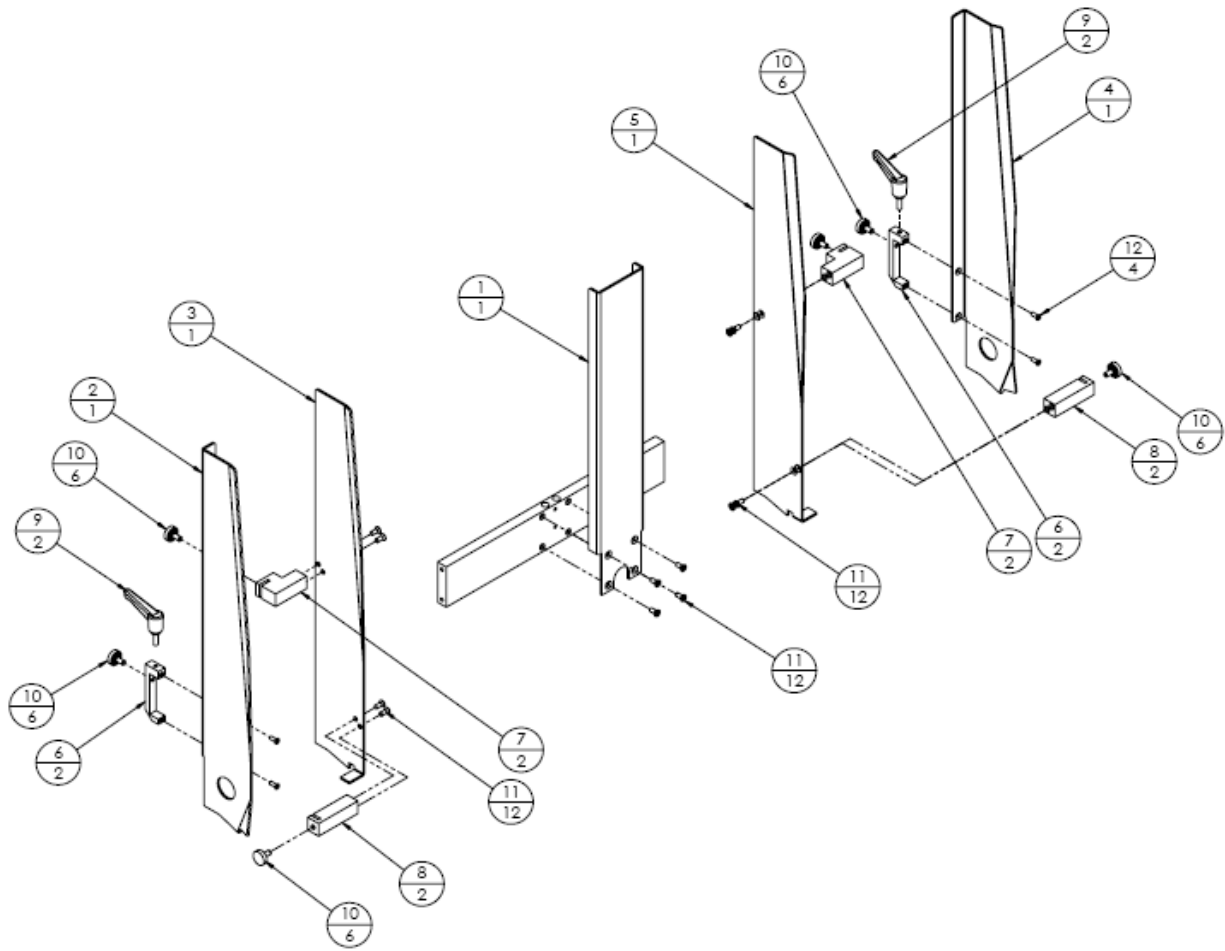
ITEM	PART NO.	QTY.	DESCRIPTION
1	10011-002	2	PLATE, ROLLER MTG
2	10012-003	2	SPACER, TONGUE
3	10006-016	2	ROLLER, TONGUE
4	10004-016	2	WEIGHT
5	-	2	SCREW, BUTTON HEAD, #8-32 X 3/8
6	-	2	SCREW, BUTTON HEAD, #8-32 X 1-1/8



ASSEMBLY, SIDE GUIDES (10020-010r0) (Fig. 12)

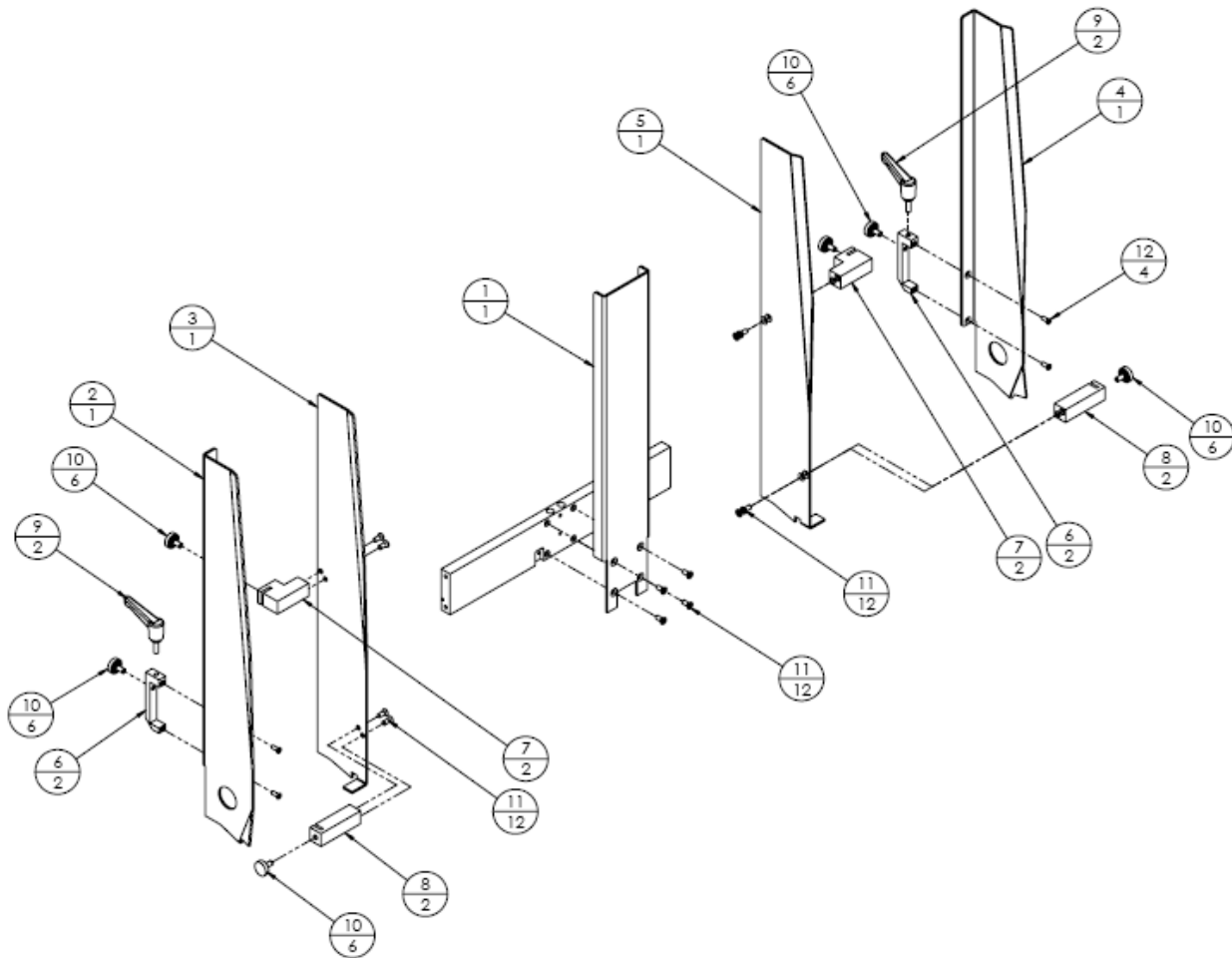
ITEM	PART NO.	QTY.	DESCRIPTION
1	10005-002	1	GUIDE, FRONT PAPER (Shrouded separator)
2	10005-008	1	SIDE GUIDE, LH
3	10005-015	1	GUIDE BUSINESS, LH TALL
4	10005-009	1	SIDE GUIDE, RH
5	10005-014	1	GUIDE BUSINESS, RH TALL
6	10009-002	2	BRACKET, SIDE GUIDE MTG
7	10007-007	2	CLAMP, BUSINESS GUIDE, UPPER
8	10007-008	2	CLAMP, BUSINESS GUIDE
9	99004-003	2	HANDLE, RATCHET, #10-24 X 5/8
10	10020-316	6	ASSY, KNOB, #10-24 X 3/8
11	-	12	SCREW, FLAT HD, #8-32 X 3/8
12	-	4	SCREW, FLAT HD, #6-32 X 3/8

Note: Item 1-P/N 10005-002 can only be used with shrouded separators. Use P/N 10005-200 When replacing a shrouded separator with the shroudless version.



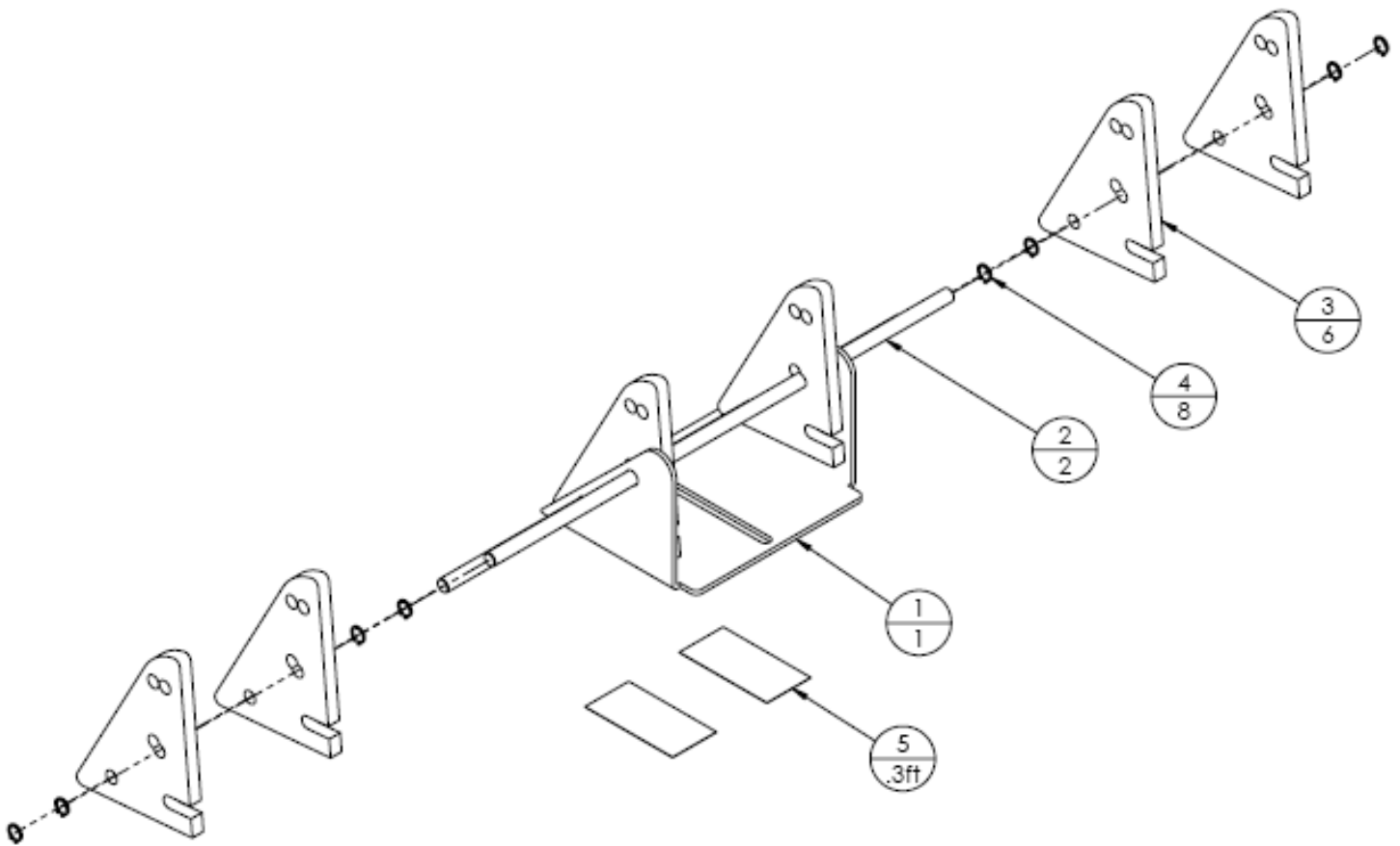
ASSEMBLY, SIDE GUIDES (10020-010rA) (Fig. 12A)

ITEM	PART NO.	QTY.	DESCRIPTION
1	10005-200	1	GUIDE, FRONT PAPER (Shroudless separator)
2	10005-008	1	SIDE GUIDE, LH
3	10005-015	1	GUIDE BUSINESS, LH TALL
4	10005-009	1	SIDE GUIDE, RH
5	10005-014	1	GUIDE BUSINESS, RH TALL
6	10009-002	2	BRACKET, SIDE GUIDE MTG
7	10007-007	2	CLAMP, BUSINESS GUIDE, UPPER
8	10007-008	2	CLAMP, BUSINESS GUIDE
9	99004-003	2	HANDLE, RATCHET, #10-24 X 5/8
10	10020-316	6	ASSY, KNOB, #10-24 X 3/8
11	-	12	SCREW, FLAT HD, #8-32 X 3/8
12	-	4	SCREW, FLAT HD, #6-32 X 3/8



ASSEMBLY, PAPER SLIDE (10020-058r0) (FIG. 13)

ITEM	PART NO.	QTY.	DESCRIPTION
1	10009-003	1	BRACKET, PAPER SLIDE
2	10004-006	2	SHAFT, PAPER SLIDE
3	10005-016	6	SLIDE, PAPER
4	99022-001	8	SNAP RING, 1/4"
5	99039-009	0.3 FT	ANTI-SKID TAPE, BLACK



ASSEMBLY, ELECTRICAL (10018-001) (FIG. 14)

ITEM	PART NO.	QTY.	DESCRIPTION
	10018-019	1	ASSY, IJ HOOD ELECTRICAL
1	98000-001	1	SWITCH, ROCKER - RED - ILLUM
2	98001-002	1	TERMINAL STRIP 12 CONN. (FEED
3	98004-032	1	CIRCUIT BREAKER 3 AMP (FEEDER)
4	98006-004	1	DIAL, SPEED POT (KB)
5	98006-021	1	KNOB, POTENTIOMETER(KB)
6	98005-001	1	CONTROLLER, MOTOR 90V DC
7	98016-021	1	CONNECTOR, 5- POS FEMALE (.093
8	98016-023	1	CONNECTOR, 2-POS MALE (.093)
9	98016-024	2	CONNECTOR, 2-POS FEMALE (.093)
10	98016-056	9	CONTACT, SOCKET (.093)
11	10011-035	1	PLATE, SWITCH COVER
12	98016-057	2	CONTACT, PIN (.093)
13	98007-011	1	PIGTAIL INTERFACE CORD
14	98003-001	1	RECEPTACLE, POWER CORD
15	98007-005	1	CORD, POWER, STRAIGHT

REF	10018-041	1	ASSY, TIME DELAY
1	98016-022	1	CONNECTOR, 5-POSITION, MALE (.093)
2	98002-001	1	RELAY, TIME DELAY
3	98002-002	1	SOCKET, RELAY
4	98016-057	3	CONTACT, PIN (.093)

ASSEMBLY, ELECTRICAL (10018-004) (FIG. 15A)

ITEM	PART NO.	QTY.	DESCRIPTION
		1	OPTION 1-02: DRY CONTACT
1	98016-011	1	RECEPTACLE, SQ FLG, AMP, 11-4
2	98016-027	2	CONTACT, SOCKET 24-20 AWG
3	12021-022	1	ASSY, CABLE, DRY CONTACT
	98016-025	2 EA	CONTACT, PIN 24-20 AWG
	98016-029	1 EA	PLUG, AMP, SERIES 1, 11-4
	98016-015	1 EA	BACKSHELL, PLASTIC, SIZE 11
4	10018-056	1	ASSY, PLUG, BYPASS
	98016-029	1 EA	PLUG, AMP, SERIES 1, 11-4
	98016-015	1 EA	BACKSHELL, PLASTIC, SIZE 11
	98016-025	2 EA	CONTACT, PIN 24-20 AWG

ASSEMBLY, ELECTRICAL 24 VAC (10018-003) (FIG. 15B)

ITEM	PART NO.	QTY.	DESCRIPTION
		1	OPTION 1-03: 24 VAC
1	98000-033	1	SWITCH, ROCKER – SMALL RED
2	98002-004	1	RELAY, DPDT 24 VAC
3	98016-011	1	RECEPTACLE, SQ FLG, AMP, 11-4
4	98016-027	2	CONTACT, SOCKET 24-20 AWG
5	98016-025	2	CONTACT, PIN 24-20 AWG
6	98016-029	1	PLUG, AMP, SERIES 1, 11-4
7	98016-015	1	BACKSHELL, PLASTIC, SIZE 11

NOTE: Delete (1) P/N 10011-035 from IJ HOOD ASSY 10018-019 (FIG 14)

ASSEMBLY, ELECTRICAL 24 VDC (10018-002) (FIG. 15C)

ITEM	PART NO.	QTY.	DESCRIPTION
		1	OPTION 1-04: 24 VDC
1	98000-033	1	SWITCH, ROCKER – SMALL RED
2	98002-025	1	RELAY, DPDT 24 VDC
3	98016-011	1	RECEPTACLE, SQ FLG, AMP, 11-4
4	98016-027	2	CONTACT, SOCKET 24-20 AWG
5	98016-025	2	CONTACT, PIN 24-20 AWG
6	98016-029	1	PLUG, AMP, SERIES 1, 11-4
7	98016-015	1	BACKSHELL, PLASTIC, SIZE 11

NOTE: Delete (1) P/N 10011-035 from IJ HOOD ASSY 10018-019 (FIG 14)

ASSEMBLY, ELECTRICAL OPTIONS (FIG. 16)

OPTION	PART NO.	QTY.	DESCRIPTION
1-05	10018-006	1	ASSY, ELEC IJ, P6 ACCUFAST
1-06	10018-008	1	ASSY, ELEC IJ 915/1015 24VDC START/STOP
1-07	10018-007	1	ASSY, ELEC, IJ, RJ45
1-08	10018-111	1	CABLE, INTERFACE BK660
1-09	10018-112	1	CABLE, INTERFACE BK 7IB/760/76
1-11	10018-113	1	CABLE, INTERFACE BK 730 TABBER
1-12	10018-110	1	CABLE, INTERFACE BK761
1-13	10018-121	1	ASSY, ELEC IJ 915/1015 SPEED FOLLOWING
2-02	-	1	SE-IJ 240 VAC
3-02	-	1	GEAR DOWN

THERE ARE NO DRAWINGS AVAILABLE AT THIS TIME FOR ELECTRICAL: FIG 14 -16